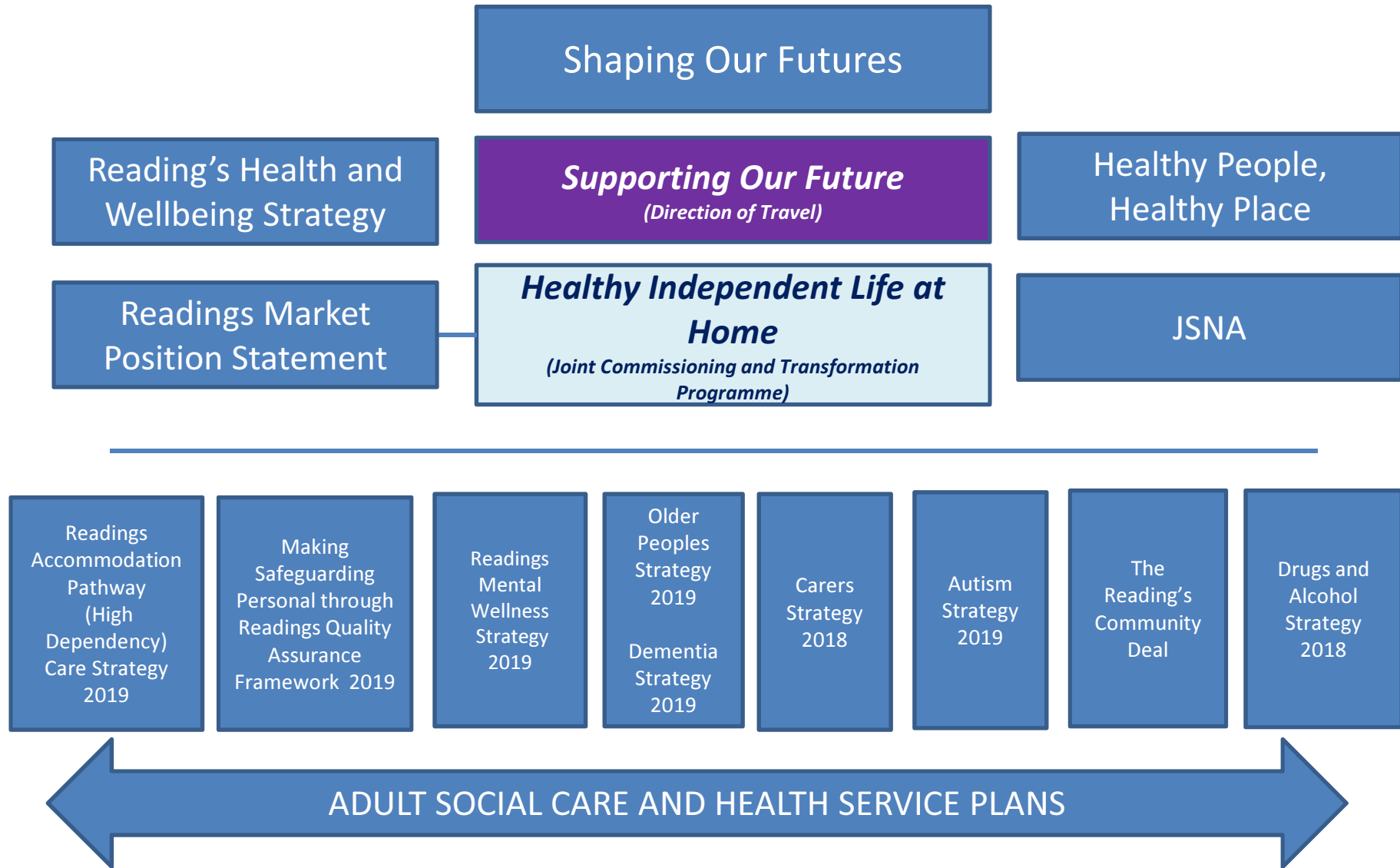


# Appendix 2 - Governance



Statement – “Adult Social Care and Health through Supporting Our Future will focus on preventing the need for care, so to maintain People to live “ Healthy, Independent Life’s, at Home”

We value - the right support, at the right time, in the right place

**Best People**

We will have a difference conversation with people, focused on;  
1 – How can we help you, help yourself  
2 – Help when you need it  
3 – Help you live you life, well longer

**Best Place**

We will Help You to remain at home in your community  
Help you to know what support is in your community  
Help you access the right information at the right time

**Best Partners**

We will Make best use of our joint workforce resources across health and social care  
Work with partners who understand your needs  
See joint opportunities with health partners – to better deliver services together

**Best Pound**

We will Ensure services are affordable, offering good value and good quality  
Ensure you have choice of care and support  
Offer you a Direct Payment to better manage your money

**Best Performance**

We will transform services so that;  
Less people needing health and social care  
Less people entering care homes  
More people living in the community  
More people being supported at work  
More people with personal budgets/ health budgets and in taking a Direct Payment  
A sustainable market place of preventative care and support providers

*Supporting Our Future*